





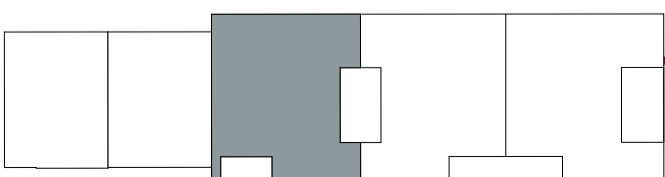
# BOUWNUMMER 06

PLATTEGROND | SCHAAL 1:50

## 1E VERDIEPING

11-06-2026

status : voorlopig



1E VERDIEPING

TRIJENSE  
*Dijk.*

BAUh  
Projectontwikkelaars

 van Es  
architecten

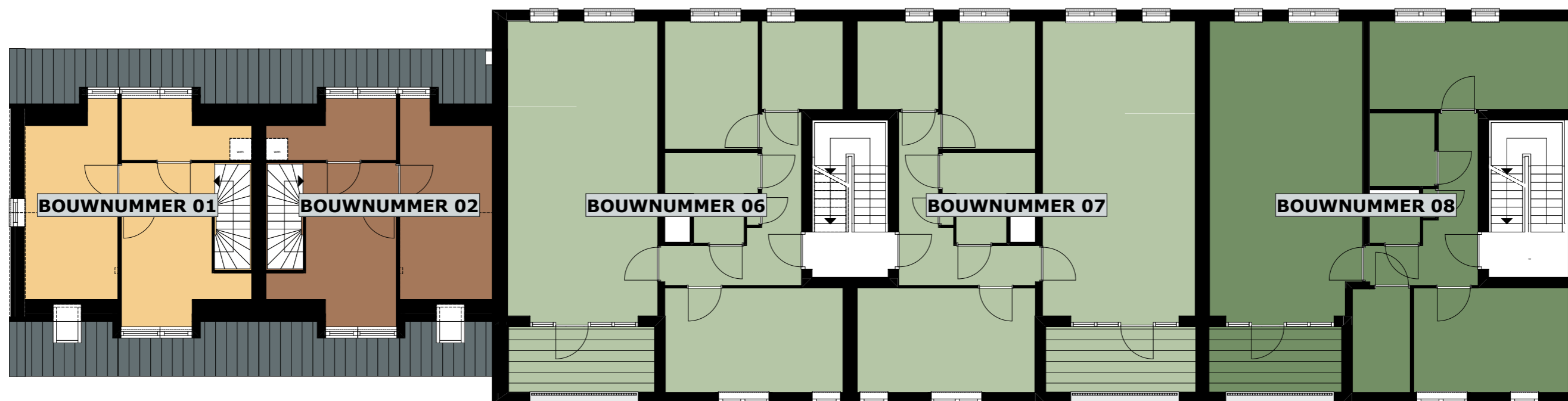


# 1E VERDIEPING

SCHAAL 1:125

11-06-2026

status : voorlopig

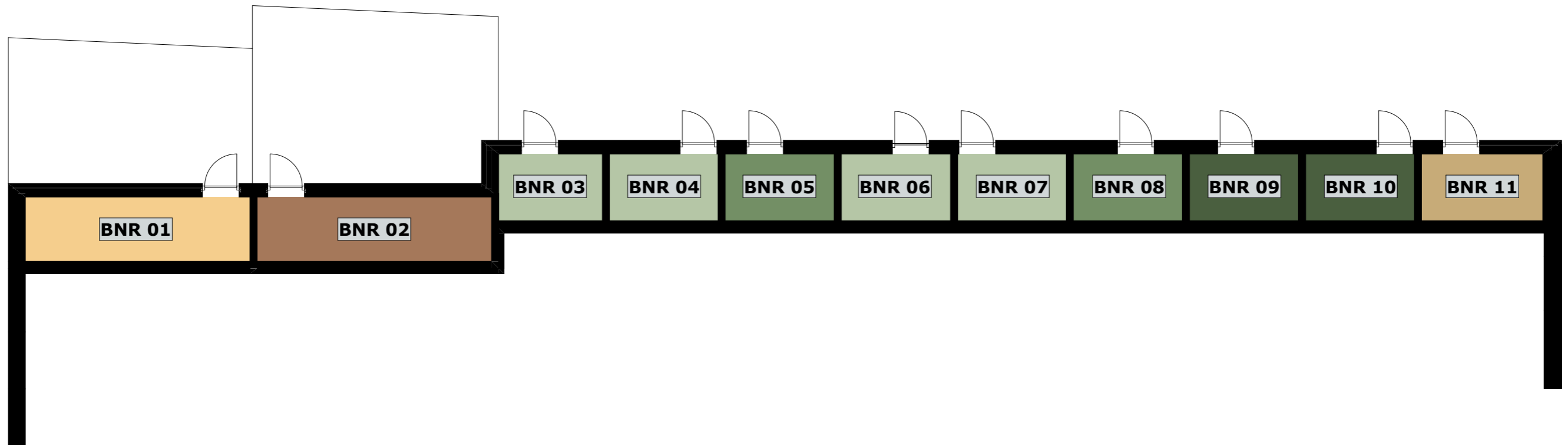


# SOUTERRAIN

SCHAAL 1:125

11-06-2026

status : voorlopig



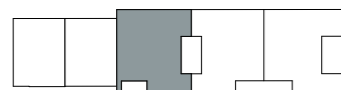
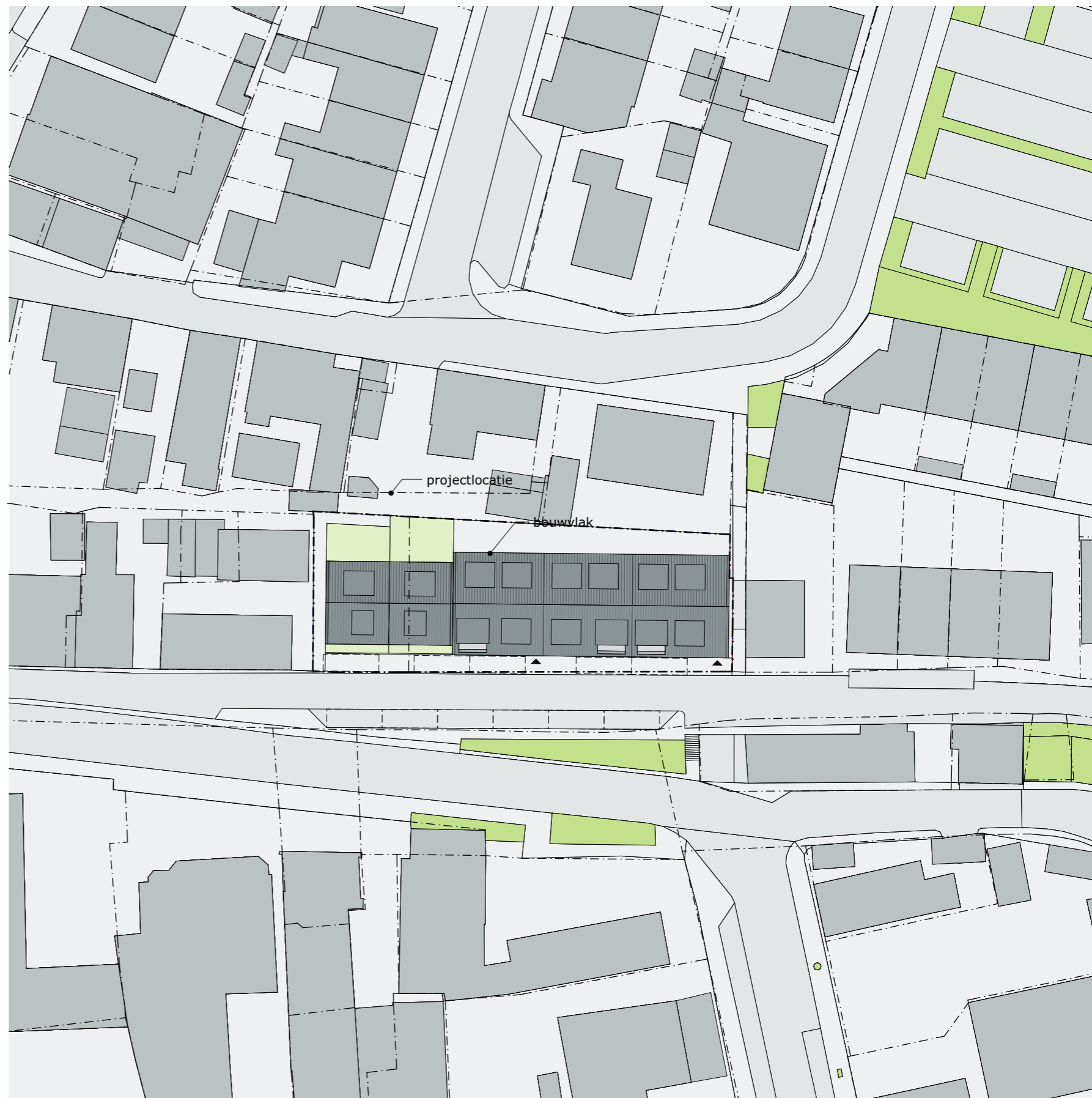
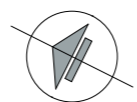
# BOUWNUMMER 06

SITUATIE | SCHAAL 1:500

1E VERDIEPING

11-06-2026

status : voorlopig



1E VERDIEPING

DE STRIJENSE  
*Dijk.*

BAUh  
Projectontwikkelaars





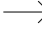



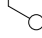


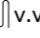
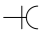


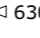
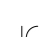


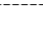

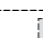
 van Es  
architecten

# BOUWNUMMER 06

## LEGENDA

11-06-2026

status : voorlopig

	- lichtpunt met aanduiding t.b.v. schakelaar		- bedrukker
	- rookmelder		- schel voor de bel
	- wandlichtpunt met aanduiding t.b.v. schakelaar (2.000+ vl.)		- videofoon
	- enkel polige schakelaar met aanduiding t.b.v. lichtpunt		- meterkast
	- wisselschakelaar met aanduiding t.b.v. lichtpunt		- verdeler vloerverwarming
	- serieschakelaar met aanduiding t.b.v. lichtpunt		- vloerverwarming
	- enkele wandcontactdoos geaard (300+ vl.)		- elektrische radiator badkamer
	- enkele wandcontactdoos geaard t.b.v. wasmachine		- circa maat (gemeten op 1,5 m')
	- enkele wandcontactdoos geaard t.b.v. installatie		- opstelplaats wasmachine/droger
	- thermostaat bedraad		- opstelplaats wtw unit
	- aansluitpunt t.b.v. data bedraad		
	- Co2 meter		

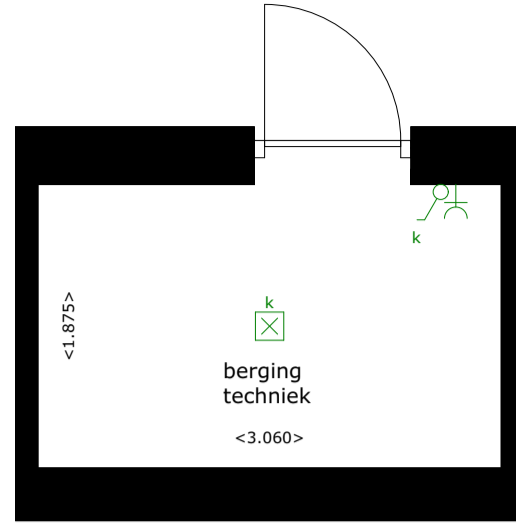
# BOUWNUMMER 06

PLATTEGROND | SCHAAL 1:50

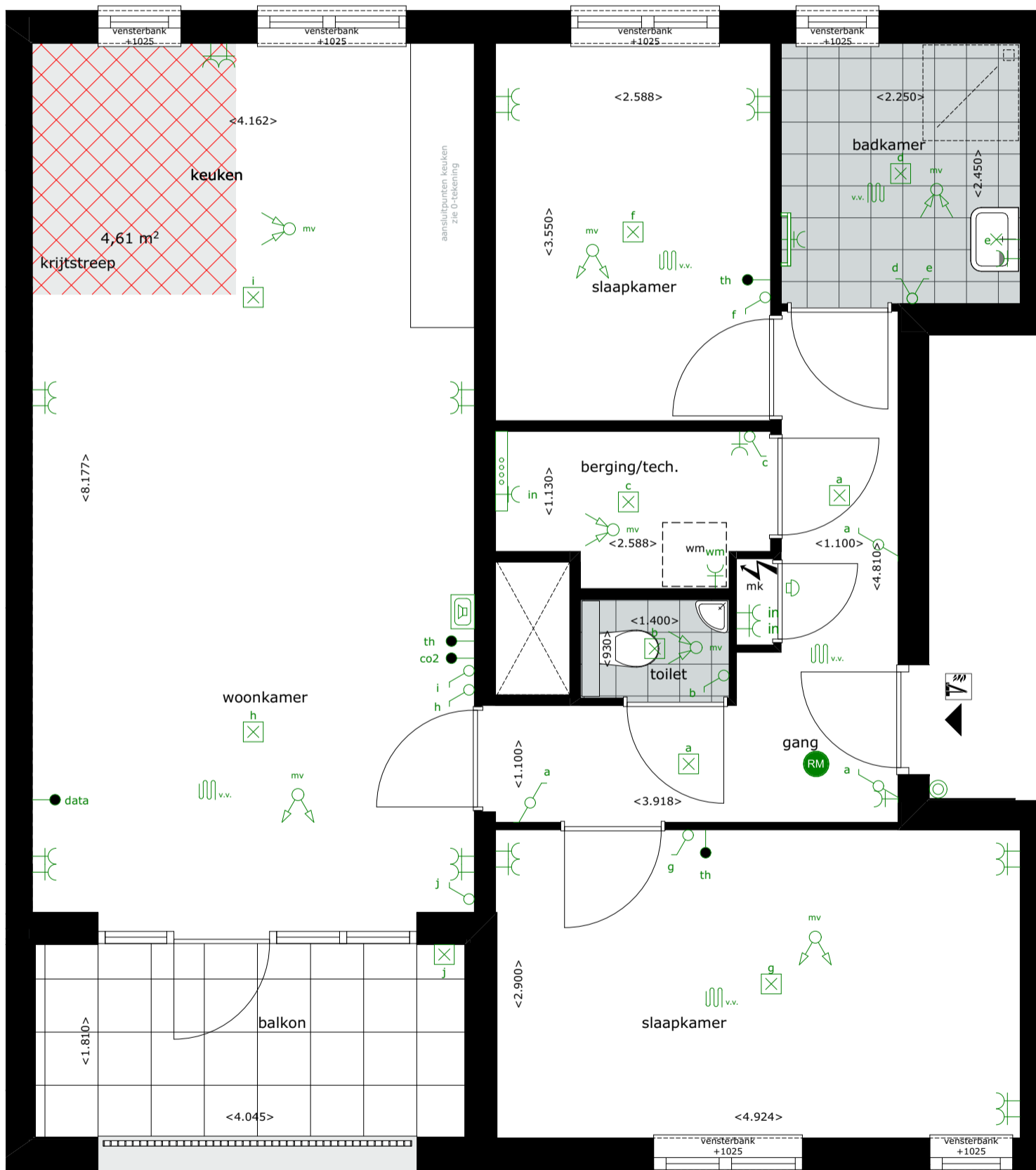
SOUTERRAIN EN 1E VERDIEPING

11-06-2026

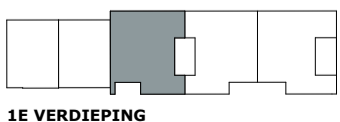
status : voorlopig



## SOUTERRAIN



## 1E VERDIEPING



1E VERDIEPING

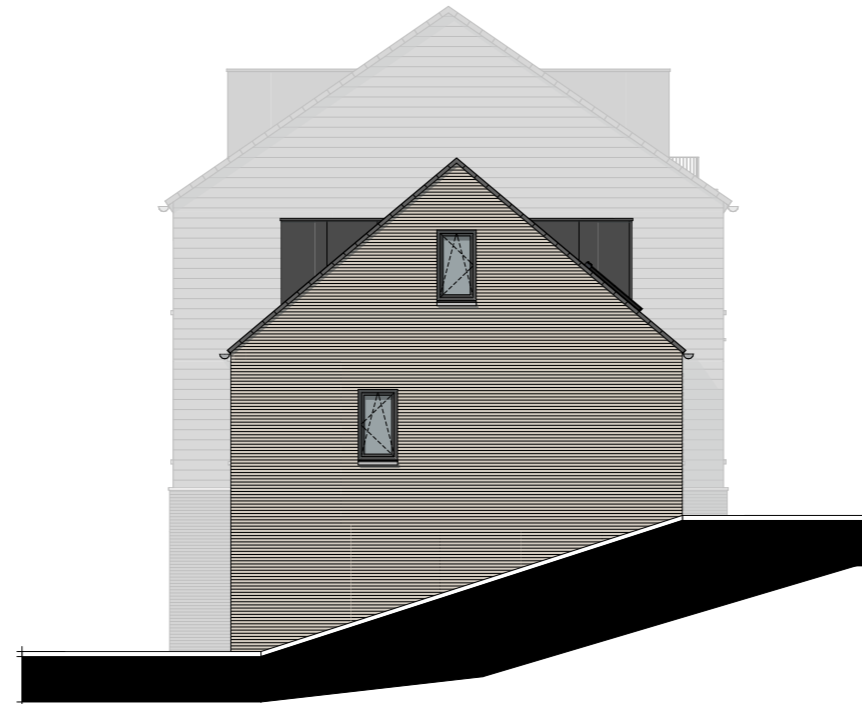
# BOUWNUMMER 06

VOORGEVEL EN ZIJGEVEL | SCHAAL 1:150

1E VERDIEPING

11-06-2026

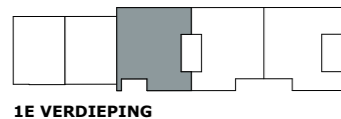
status : voorlopig



NOORDGEVEL



OOSTGEVEL



1E VERDIEPING

DE STRIJENSE  
*Dijk.*

BAUh  
Projectontwikkelaars

 van Es  
architecten

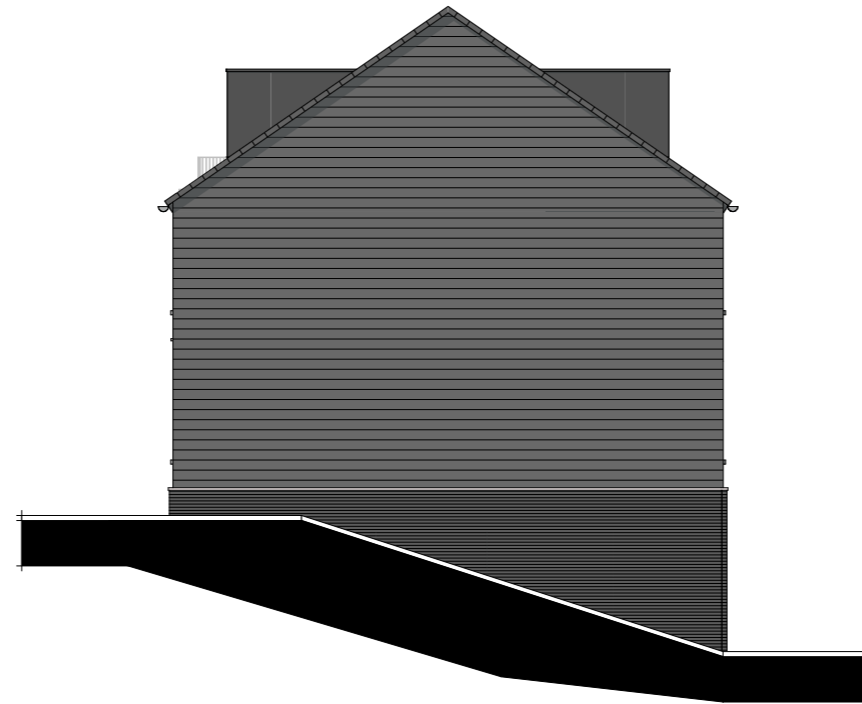
# BOUWNUMMER 06

ACHTERGEVEL EN ZIJGEVEL | SCHAAL 1:150

1E VERDIEPING

11-06-2026

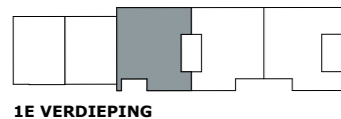
status : voorlopig



ZUIDGEVEL



WESTGEVEL



1E VERDIEPING

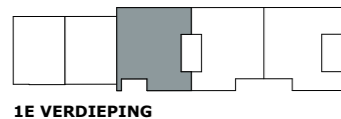
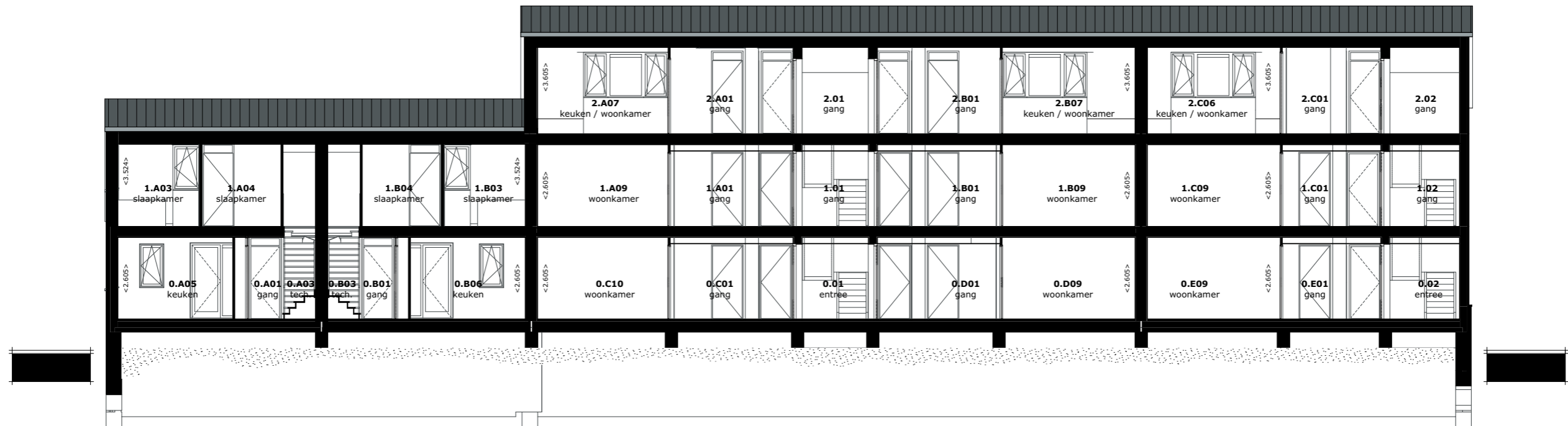
# BOUWNUMMER 06

DOORSNEDE | SCHAAAL 1:150

1E VERDIEPING

11-06-2026

status : voorlopig



1E VERDIEPING